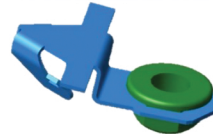


+1 734.523.1000  
alphausa.com



Snap Lock Nut Square Panel Hole Hex Flange Nut Clip



Snap Lock Nut Triangle Panel Hole Hex Flange Nut Clip



Extruded & Threaded Barrel Type Clip



Hex Nut Type Clip



Spring Nut Type Clip



Snap Lock Bolt Key Hole Panel Type Clip



Carriage Bolt Key Hole Panel Type Clip

Installation - self wrenching	✓	✓	✓	✓	✓	✓	✓
Metric sizes available - M8 thru M12 sizes available	✓	✓	✓				✓
Ergonomic standard - meets 45N installation maximum requirements	✓	✓		✓	✓		✓
Fastener standard - meets published property class 10 clamp load and proof load requirements	✓	✓					
Fastener standard - meets published property class 10.9 clamp load and proof load requirements						✓	
Fastener standard - meets published property class 10 prevailing torque maximum requirements	✓	✓					
Fastener standard - meets published property class 10 first on & third off requirements	✓	✓					
Fastener standard - maintains published joint clamp load in extreme vibration environments	✓	✓				✓	
Fastener standard - maintains published fastener standard joint clamp load in extreme thermal cycling environments	✓	✓				✓	
Thread integrity - resistant to joint threads seizing due to rust	✓	✓		✓	✓	✓	✓
Thread integrity - nut thread lead-in to bolt at installation for anti-cross threading	✓	✓	✓	✓	✓	✓	✓
Thread integrity - nut self-aligns to bolt at installation for anti-cross threading	✓	✓				✓	✓
Rigid connection - zero panel movement under load/unload cyclical events - no squeak & rattle	✓	✓		✓		✓	✓
Coating and finishing - available in all customer specific fastener coatings	✓	✓	✓	✓	✓	✓	✓
Hydrogen embrittlement resistant - manufactured using embrittlement resistant preheat-treated material	✓	✓				✓	
Serviceability - joint disassembly using common box / open style wrench or socket	✓	✓		✓		✓	
Manufacturing Efficiency - designed for minimization of material waste in product manufacture	✓	✓		✓	✓	✓	✓
Manufacturing Efficiency - designed for simplification of part production tooling and infrastructure	✓	✓		✓	✓	✓	✓