

+1 734.523.1000
alphausa.com



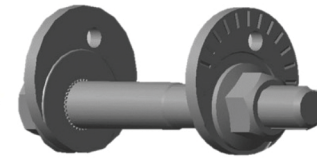
AlphaUSA
Asymmetrical Shank Cam Bolt Assembly Type



AlphaUSA
Asymmetrical Shank and Spacer Cam Bolt Type



Single Flat Cam Bolt Type



Single Groove Cam Bolt Type



Double Groove Cam Bolt Type

Metric sizes available - M10 thru M16 sizes available	✓	✓	✓	✓	✓
Thread integrity - threaded area of cam bolt is uniform and without thread interruptions	✓	✓			
Fastener standard - threads meets published fastener joint clamp load without upsizing fastener to meet load	✓	✓		✓	✓
Fastener standard - maintains uniform clamp load force across the entire bearing surface	✓	✓		✓	✓
Fastener standard - maintains published joint clamp load in extreme vibration environments	✓	✓		✓	✓
Fastener standard - maintains published fastener standard joint clamp load in extreme thermal cycling environments	✓	✓		✓	✓
Manufacturing advantage - ease of manufacturing uniform cam orientation feature	✓	✓			
Serviceability - adjustment forces on the loose cam side are directed into the bolt shank and not into the bolt threads	✓	✓			
Serviceability - uniform engagement of threads results in less thread degradation due to rust penetration	✓	✓			
Ergonomic assembly - self aligning for blind assembly	✓	✓	✓	✓	✓
Coating and finishing - available in all customer specific fastener coatings	✓	✓	✓	✓	✓