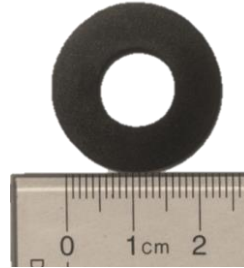
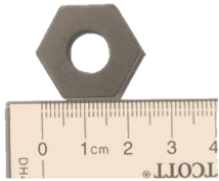


Save on expensive tooling and set up costs with these currently available Alpha products

- These Flat Washers are ideal for multiple uses such as Automotive/Construction/HVAC/Agriculture



SOLD OUT

- Alpha Part# NA1435S
- Steel Grade M180 (Martensitic Steel)
- Hex washer offers unique shape for tight space application still delivering clamp load dispersions

- Alpha Part# NA2007S
- Steel Grade C1050
- Hex washer offers unique shape for tight space application still delivering clamp load dispersions

- Alpha Part# F7578S
- Steel Grade C1074
- Heat treated for additional hardness

- Alpha Part# S1512S
- Steel Grade 410
- Stainless Steel
- Heat treated for additional hardness
- Wave design offers spring like function

\$.007 per pc (1,000 pc minimum)

\$.02 per pc (1,000 pc minimum)

\$.007 per pc (1,000 pc minimum)

\$.000 per pc 1,000 pc minimum

NA1435S	OD	ID	Thickness
Inches	.9704	0.3779	0.0429
MM	24.6500	9.6000	1.090

NA2007S	OD	ID	Thickness
Inches	0.9840	.4960	0.102
MM	24.9900	12.600	2.591

F7578S	OD	ID	Thickness
Inches	0.9970	0.4525	0.022
MM	25.3200	11.5000	0.560

S1512S	OD	ID	Thickness
Inches	.9050	0.0225	0.0150
MM	22.9800	9.5000	0.3800



- Alpha Part# S2010S
- Steel Grade C1008
- Center-line Crested Washer

- Alpha Part# S2139
- Zinc Coated
- Protective Rubber Sleeved edge
- Ideal for hoses or wiring

- Alpha Part# S1634S
- Steel Grade C1008
- Heavy duty flat washer

\$.022 per pc (1,000 pc minimum)

\$.35 per pc (1,000 pc minimum)

\$.26 per pc (1,000 pc minimum)

S2010S	OD	ID	Thickness
Inches	1.430	.3790	.0620
MM	2.000	1.000	1.5800

S2139	OD	ID	Thickness
Inches		1.3800	0.0500
MM		35.0500	1.2700

S1634S	OD	ID	Thickness
Inches	3.0260	.7480	0.1910
MM	76.8600	18.9900	4.8500

Payment terms net 10 days
FOB Factory: Livonia, MI 48150



Made in USA

AlphaUSA

To place your order please contact:
rfq@alphausa.com or call us at
734.634.3921

Rev: 20170222